

*Church of the Sacred Heart  
Roslindale, MA*

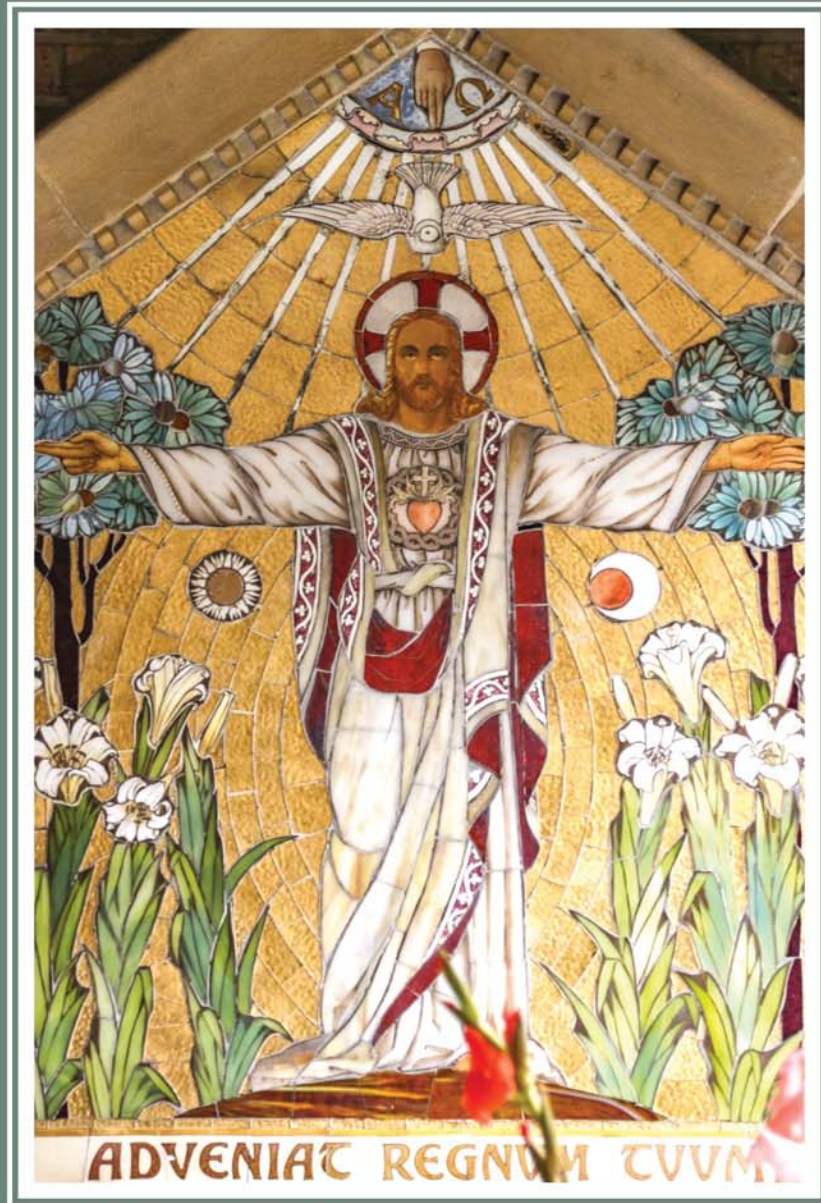


Photo: Fr. Lawrence Lew, O.P.

FOURTEENTH SUNDAY IN ORDINARY TIME

"Come to me, all you who labor and are burdened, and I will give you rest."

Matthew 11:28

## From the Pastor's Desk

We come to the celebration of our independence on this fourth of July and none of us are happy or at peace. The coronavirus has touched everyone's lives, changed our behavior and is slowly teaching us caution. Racism is all over the land. Truly this is our original sin. Our once flourishing economy now has millions of people without work. and our political divisions only worsen with each week. Did I leave anything out?

We are entering a cycle of electing national and state leaders for the next two to four years. We, the people are expected to act well for the good of all. Whatever your race, religion, creed, we each make a contribution to practice citizenship which is faithful, moral, character driven, and honest.

In the immediate months, the pressing issues for us are to care and protect each other's health so as to control the virus, to change racist biases of any sort, and support our neighborhoods economically and with charitable giving.

Finally, all who are members of Sacred Heart parish, pay close attention to one another. Over the past 30 years we have grown together into a faith community of racially mixed people, we do not claim to have solved racist attitudes, still we are learning to understand and trust one another. In these simple ways we show forth God's power in our weakness. God bless us!

*Msgr. Frank Kelley.*

Monastery of St. Clare  
920 Centre St, Jamaica Plain  
617-525-1760

## TRIDUUM IN HONOR OF ST. CLARE PRIVATE ONLY

You may mail or phone in your intentions and we will pray for them and you at this time.

## Mass Intentions

### SACRED HEART SUNDAY MASSES

Thanks to Guillermo and Anthony Perez and Jose Carerrero and Fr. Succes we have Mass in English and Spanish on Sunday starting at 10 am on YouTube.

Go to the Parish website:  
[www.sh-rosliindale.org](http://www.sh-rosliindale.org) and click *Watch Services Online* which will bring up the channel.

*Fr. Kelley, Fr. Succes, Fr. Sullivan & Fr. Elias*

## Mass Intentions

### SATURDAY, July 4

4:00 pm Mass of Thanksgiving

### SUNDAY, July 5

10:00 am Tony Favorito

Memorial

12:00 pm Sunday Mass Spanish

### TUESDAY, July 7

8:30 am Special Intention

### FRIDAY, July 10

8:30 am Sacred Heart Memorial



*Those we know and love who share in Christ's suffering through illness:*

*Martina Aguguo - Lucy Algere Knox - Yaritza Baerga - Danielle Broderick - Francisca Cruz - Tara Daniels - Christine Carroll - Kathleen Durepo - Gabriela Gonzalez - James Gordon - Kathy Hardiman - Chet Havey - Richard Fraser - Ed Girvan - Andres Hernandez - Ileana Thompson - Anthony Jarrobino - Christopher Keegan - Mary Kearns - Carmine Lavoie - Robert Lynch - Barbara McAweeney - Jennifer McGoldrick - Helen Kearns Moffie - Bridget Mulkerrin - Robert Newman - Rhonda Owens - Jahaidy Nova - Marie Poledo - Monica Santiago - Evelyn Shanahan - Ernst & Yvrose Toussaint - Midge Whelan - Janice Williams.*

*May Christ heal all their ills.*



We gratefully acknowledge the Gift to the Memorial Fund given to the Glory of God in Memory of:

**Mary E. Cuddy** by:

*Mary Mooncai, Kathleen & Terence Kelly, John & Jennifer Chartier, Paolo Sepe, Armand & Janice Soucy, Rev. Robert A. Spencer, Irma C. Carter.*

**CATHOLIC APPEAL 2020**

For those who wish to make a contribution currently can do so online ([www.bostoncatholicappeal.org](http://www.bostoncatholicappeal.org)) or through the request you may have received in the mail.

**ST. VINCENT DE PAUL SOCIETY**

*The St. Vincent de Paul Society is very thankful for all the food that has been supplied by Gourmet Caterers to the needy of our community in the past months. We are very grateful to Mr. Wiggins and his gracious staff for their generosity.*

*The St. Vincent de Paul Society at Sacred Heart is here to help you. If you, or someone you know, is in need of assistance, please call us at the parish office.*

**WeShare SIGN UP TO GIVE ONLINE**

**HOW TO CREATE YOUR ONLINE GIVING ACCOUNT**

It's as easy as 1 2 3 to create your account online right on our parish website

Visit [www.sh-roslindale.org](http://www.sh-roslindale.org) and click WeShare on the home page

Click on Regular Offertory Make a Donation

Click Recurring Donation, enter your donation amount and frequency.

It's that easy. Your account will be created and you can start giving online. You can make changes at any time.

**SACRED HEART PARISH**

Roslindale, MA

**PARISH STEWARDSHIP**

Dear Friends:

*Thank you for your continued Stewardship of Sacred Heart Parish. The weekly income is contributed through two sources, envelope giving and online contribution through WeShare. Thank you.*  
Fr. Kelley

	<u>February</u>	<u>February</u>	<u>February</u>
<u>Week</u>	<u>2018</u>	<u>2019</u>	<u>2020</u>
<b>1</b>	8446	7389	8181
<b>2</b>	7391	9232	7348
<b>3</b>	7192	8835	6339
<b>4</b>	10408	7010	7720

*(includes Mass offertory and electronic giving via WeShare.com)*

**Parish Tithes for January 2020 (5% of monthly offertory)**

Immaculate Conception Church P.R.	<b>1</b>	\$370
Parish Utilities & Energy Costs	<b>2</b>	\$2,250
Bethany Hill Place	<b>3</b>	\$370
Support of the Church around the World	<b>4</b>	\$370
Catholic Charities—Ash Wednesday		<u>\$1,542</u>
Total		\$4,902

**Sacred Heart Parish**

**Week ending 6/20/2020**

Mass Offertory 6/14/20 \$2,311  
Offertory received by mail \$1,295

We Share donations

Offertory \$8,854  
One-Time \$250

**Total \$9,710**

**STEWARDSHIP**

Why not keep a record for one week of how you spend your time? How much do the Church and community organizations get of that time?



### Sacred Heart International

The Sacred Heart International Group meets on **Wednesday, July 8 at 7 pm in the Zoom Room.** Everyone—from the 40+ countries and many states making up Sacred Heart Parish—is welcome.

El Grupo Internacional de Sacred Heart se reúne **el Miércoles, 8 de julio a las 7:00 PM. por Zoom.** Todos, de los más de 40 países y muchos estados que conforman la Parroquia del Sacred Heart, son bienvenidos. Email [pat.suhrcke@gmail.com](mailto:pat.suhrcke@gmail.com) to receive an invitation.

**Everyone is Welcome! Please Come!**

### Keeping in Touch

In these unprecedented times of Coronavirus, we understand how isolating and lonely life can be without having the ability for in person visitors, gatherings with family or friends or attending mass.

In an effort to stay connected, members of our parish will be reaching out via phone to say hello and offer supportive listening to those who might not otherwise be in contact with the community. If you or someone you know would benefit from a call, or if you would like to volunteer, please sign up by calling or e-mailing the Rectory at 617-325-3322 [sacredheartparish@sh-roslindale.org](mailto:sacredheartparish@sh-roslindale.org). We will provide a script for use and some resources to assist. Stay safe and be well.

### Manteniéndonos en Contacto

En estos tiempos únicos, y sin precedentes con el Coronavirus, entendemos cuan aislada y solitaria puede ser la vida, sin la capacidad de poder recibir visitas, o tener reuniones con nuestros familiares, amigos, o sin poder asistir a Misa.

En un esfuerzo por mantenernos conectados, y como una forma de apoyo, algunos miembros de nuestra parroquia se comunicarán por teléfono para saludarle y escucharle especialmente aquellos miembros que quizá no estén en contacto con la comunidad. Si usted, o alguien a quien usted conoce cree que se beneficiaría de una llamada telefónica, o si le gustaría ser voluntario o voluntaria, por favor comuníquese con la Rectoría al 617-325-3322 o por correo electrónico a [sacredheartparish@sh-roslindale.org](mailto:sacredheartparish@sh-roslindale.org). Para ayudarle con este esfuerzo le proporcionaremos un guion para que pueda usarlo, como también algún otro recurso que le pueda ser útil. ¡Manténgase seguro o segura y saludable!

### Today's Liturgy

Jesus exclaimed, *"I give praise to you, Father, Lord of heaven and earth, for although you have hidden these things from the wise and the learned you have revealed them to the little ones."*

As I reflected on these words of Jesus, my class of kindergarteners came to mind. They certainly exhibit great enthusiasm to be believers because they have been told they have believed. They have the ability to believe without seeing. Children at this age ask a lot of questions about God. They always want to know why. They want to know what God was thinking and how it pertains to them.

I think adults can learn so much from children. They put their whole self into praying, singing, and believing in God. They question what they don't understand, but at the same time they remain faithful to God in their innocence. We as adults need to continue to question our faith, so we too can continue to grow. We also need direction as to how we can live the gospel. Let us all put our whole self into praying, singing and worshipping God. In the end it will make us as well as our parish family of Sacred Heart that much stronger.

*Maureen McCarrick*

## Flocknote

### What is Flocknote?

Most churches can't reach their people when they need to — in between Sundays or if a person stops showing up on Sundays. Flocknote helps churches fix that with a smarter way to text message and email their members. Flocknote churches can reach all their members at a moment's notice, resulting in higher attendance, increased stewardship, and a more connected church.

Please consider signing up for Flocknote. There are two ways to register.

1. On your cell phone, text message SHP169 to phone number 84576. SHP169 is all one word, no spaces. And make sure your auto-spelling-corrector on your phone doesn't mistakenly change the text. Once you send that in, Flocknote will text you back a confirmation message AND another message with a link you'll need to click to complete the process.

To join in Spanish (envie texto para participar en Español), use this number: 202-765-3441.

2. Go online to: [Sacredheartchurch39.flocknote.com/](https://Sacredheartchurch39.flocknote.com/) and sign in with your name, email, and phone number.

Thank you for helping to improve communications in our parish

*Msgr. Frank Kelley*



We would like to share the wonderful news that two of our scholars were winners in the essay contest sponsored by the Catholic Schools Office and the Museum of Science. The topic was "How to Deal with the Corona Virus" and open to all from PK to Grade 8. Congratulations to Malia Mack, Grade 5 and Amelie Ambroise-Louis, Grade 7!

## PARISH FINANCIAL SITUATION

Dear Friends,

As we begin the new financial year, the Finance Committee meets to consider a budget for the coming year. As you can imagine, Sacred Heart, like all parishes, is in a serious situation. We are beginning to plan for a budget for the coming year. In 'pre-covid' times our parish income from offertory, online giving, (WE SHARE) , and individual gifts averaged between \$7500--8500 a week. These days our weekly income has declined by 25% in total offering.

Below is a snapshot of our income over two week in June of 2020. As you can see the monthly contributions from 'online' giving is keeping us afloat, just barely. We have seen a 25% increase in donors contributing to WE SHARE . Thank you for this. Please consider switching to the WE SHARE giving on our parish web site.

At present we are able to bring back our personnel on a half time basis. This limits our capacity to minister to one and all. I ask for your patience with us in these difficult times.

*Msgr. Frank Kelley.*

6/14/20 Mass offertory	\$2,311
Offertory rec'd by mail	\$1,295
WE SHARE (online) month of May	\$5,854
One-time gift	\$250
total as of June 6/15/20	\$9,710



# The Parish of Sacred Heart

**169 Cummins Highway  
Roslindale, MA 02131**

**Tel: 617-325-3322 Fax: 617-325-2145**

[www.sh-roslindale.org](http://www.sh-roslindale.org)

E-mail: [sacredheartparish@sh-roslindale.org](mailto:sacredheartparish@sh-roslindale.org)

## MISSION STATEMENT

Rooted in the universal call to discipleship, the mission of Sacred Heart and St. Andrew the Apostle Parish in Roslindale and Forest Hills is to preach Jesus Christ. Proclamation of the gospel of Jesus Christ takes many forms: preaching, worship, education, service, works of mercy, and evangelization. The staff and the congregation are guided by the overall mission to proclaim the victory of Jesus Christ over sin and death in this time and place.

By this mission we are to be judged.



## Parish Resources

Rev. Msgr. Francis H. Kelley, Pastor

Rev. Succes Jeanty, Parochial Vicar

Deacon Jesus Quiles Deacon Antonio Perez

*Parish Secretaries:* Mary Dillow & Margaret Laboy

Rev. Eugene P. Sullivan, Sr. Priest, In Residence

### Sunday Masses:

Saturday Eve: 4:00 PM

Sunday: 8:00 AM, 10:00 AM & 5:15 PM,

12:00 PM in Spanish

### Weekday Masses:

Monday-Friday: 8:30 AM

Saturday: 8:30 AM

### Penance:

Saturday, 3:00-3:45 PM, Lower Church

### Baptism:

Call Rectory for arrangements.

### Marriage:

Call Rectory to speak with one of the priests at least 6 months before the marriage.

**Rectory Office 617-325-3322 FAX 617-325-2145**

### Sacred Heart School:

Mrs. Monica Haldiman, Principal

1035 Canterbury St, Roslindale 02131

Office: 617-323-2500

Fax: 617-325-7151

Tuition: 617-325-0229

After School Program: 617-325-3656

[www.SacredHeart-Boston.org](http://www.SacredHeart-Boston.org)



## Prayer of Spiritual Communion

*No particular prayer or formulary is required, though there are acts of spiritual communion in Catholic prayer books to help focus a proper intention. One of the most popular is that composed by St. Alphonsus Liguori:*

“My Jesus, I believe that you are present in the Blessed Sacrament.

I love you above all things and I desire you with all my heart.

Since I cannot now receive you sacramentally,

I ask you to come spiritually into my heart.

I embrace you as if you were already in my heart and unite me to you completely.

Please do not let me ever be separated from you.”

## REST IN PEACE

*Please pray for those who have died, that they may know the peace of God's kingdom:*

We remember Andrew Boschetto Jr., Rev. Henry M. Cunney, Teresa D'Amato, Walter Boggio, Dorothy McCarthy, Alicia Contreras, Hector Baez, Janet Lopez, Andres Alcenio Valera, Edgar Algere, Beatrice Nwanze, Donald Howell, Evelyn Broderick and Germaine Lindor who have recently passed.



**Dr. Adrienne Ulrich**  
*A lifelong resident of West Roxbury, Dr. Ulrich is dedicated to helping her community hear their best.*

*"The pathway to better hearing."*

**Parkway HEARING**

**FREE 30 DAY TRIAL**

617-327-0881 • [www.parkwayhearing.com](http://www.parkwayhearing.com)  
 540 VFW Parkway, Suite 1 • West Roxbury, MA



841 Main Street  
 Tewksbury, MA 01876  
 (978) 851-9103

**Rosaries from Flowers**  
*"Handmade from the Flowers of your Loved One"*

[www.rosariesfromflowers.com](http://www.rosariesfromflowers.com)

**W WELLSMERE**  
 MONUMENTAL WORKS



Family Owned, Over 130 years of Experience  
 In Home Visits & Late Office Appointments Available

3841 Washington St., Roslindale  
 (AT FOREST HILLS STATION)  
[www.wellsmere.com](http://www.wellsmere.com) • [Joseph@wellsmere.com](mailto:Joseph@wellsmere.com)  
 617-524-6648

**TBROS**  
 TRETHERWEY BROTHERS INC.

For all your cooling needs.

4280 Washington St. Roslindale MA  
 617-325-3283 [tbros.com](http://tbros.com)  
Lic# 11207

**Fatima Now Peace Now**

Please recite the rosary for the consecration of Russia and your intentions.

To please the Christ Child observe the first Saturday devotion.

"Be a Servant" *Matthew 20:26*



**SHOP LOCALLY.**  
 HELP KEEP THE LOCAL ECONOMY VIBRANT.

**W. C. Canniff & Sons, Inc.** Monuments & Lettering



531 Cummins Hwy • Roslindale  
**617-323-3690**  
 Since 1896  
[www.CanniffMonuments.com](http://www.CanniffMonuments.com)

**COMPLETE PAVING & MASONRY**  
**617-286-9614**

Find us on Facebook

- Steps
- Pavers
- Driveways
- Brick Patios
- Walkways
- Natural Stone
- Concrete
- Retaining Walls
- Free Quotes
- Basement Waterproofing

**20% Discount**

All work guaranteed Licensed and Insured  
[WWW.COMPLETE-MA.COM](http://WWW.COMPLETE-MA.COM)  
[INFO@COMPLETE-MA.COM](mailto:INFO@COMPLETE-MA.COM)

**AD SPACE AVAILABLE**  
 617-779-3771

☺ **SAVE A LIFE** ☺

**KIDNEY TRANSPLANT DONOR NEEDED**

**BLOOD TYPE "O" POSITIVE**

**CONTACT: SAVELICIA@GMAIL.COM**




**Catholic Cruises and Tours and The Apostleship of The Sea of the United States of America**

**Catholic Cruises and Tours to Worldwide Destinations**  
*Mass is included with all of our tours!*

Holy Land Discovery • Fatima, Lourdes and Shrines of Spain • Grand Catholic Italy • Footsteps of Apostle Paul • Shrines of Alpine Europe

- Pilgrimage to Lourdes • Scottish Highlands
- Camino, a walking journey for the soul

Call us today at 860-399-1785 or  
 email [Janet@CatholicCruisesandTours.com](mailto:Janet@CatholicCruisesandTours.com)  
[www.CatholicCruisesandTours.com](http://www.CatholicCruisesandTours.com)



Catholic Cruises and Tours  
 Take your FAITH ON A JOURNEY





**Healthier Priests. Stronger Communities.**

The strength of our communities depends on the well-being of our priests who tirelessly serve others.

*Please support [clergytrust.org](http://clergytrust.org)*

*An independently managed trust for the care of active and senior priests in good standing.*

**Emergency cleanup, mitigation and reconstruction**

**CLEANREMODEL**  
 SPECIALIZED CLEANING & REMODELING

 FLOOD  FIRE  MOLD  STORM

**24 Hour Emergency Response**  
**781-686-9687**

**"We deal with the insurance company, so you dont have to"**  
[www.cleanremodel.com](http://www.cleanremodel.com)

# P.E. Murray ~ F.J. Higgins

## George F. Doherty & Sons Funeral Home & Cremation Service

Bryan F. Higgins, George F. Doherty, Edward J. Doherty, Edward J. Doherty, Jr., Patrick J. Twomey  
**PEMurrayFuneral.com • 617-325-2000 • 2000 Centre Street, West Roxbury**

### Servicios de Inmigración



**Reyna Services LLC**  
 Traducciones • Notario Público  
 Contabilidad • Impuestos ("Income Tax")  
 339 Centre Street, Jamaica Plain, MA 02130  
 (617) 553-1903 www.reynaservices.com  
 Professional Services! "Hablamos Español"

COMFORT. SERVED NIGHTLY.

4515 Washington Street, Roslindale 617-923-2111 pleasantcafe.com

**SuperFlash T-Shirts!**

Don't see what you're looking for?  
 Call us now and we'll find it for you!

**617-323-9374**

www.sflashtees.com  
 Email: sflashtees@verizon.net  
 1731 Centre Street • West Roxbury

**BOJETAX** Tax & Financial Services

Serving the local community for over 30 years

617-469-5434 | BojeTax@aol.com  
 30 Eastbrook Road, Unit #403, Dedham

Quick Refund • Se Habla Espanol

**Dele Boje**  
 Proprietor

**GORMLEY**  
 Funeral Home and Cremation Services

West Roxbury  
 617-323-8600  
 www.gormleyfuneral.com

BOSTON BEST HOME CARE SERVICE INC.

Private Care Duty - 24 Hr Service  
 Housekeeping - Alzheimer's  
 Dementia Care & More

857-891-0106  
 bostonbesthomecareserviceinc.com

**MORENO** Auto Collision Inc

Insurance Collision Specialist  
 RELIABLE AND TRUSTWORTHY

4164 Washington St.  
 Roslindale, MA 02131

**617-333-0319**  
 morenoautocollision@gmail.com  
 www.morenoautocollision.com

**COSGROVE & McMENIMON INSURANCE**

Since 1911

William E. Robinson  
 President

4258 Washington St. Roslindale, MA  
 617-327-6226  
 wbillinsurance@aol.com • www.candminsurance.com

**ST. MICHAEL**  
 CEMETERY & CREMATORY

The Respectful Way...

500 Canterbury St. Roslindale  
**617-524-1036** Proudly Serving the Families of Sacred Heart  
 www.stmichaelcemetery.com

"Jesus Wept." John 11:35

**PROUD SUPPORTER OF SACRED HEART PARISH**

EUGENE J. KERRIGAN, CLU®, CHFC®  
 Financial Planner

617.585.4585  
 200 Clarendon Street,  
 19th Floor Boston,  
 Massachusetts 02116

**BAYSTATE FINANCIAL**

**SEBASTIAN'S**  
 Paul Mitchell and Other Hair Care Products

**617-323-9448**  
 Open six days for your convenience.  
 6-8 Corinth Street, Roslindale

**Hyde Park Auto Service**  
 Al Milton  
 Parishioner & Proud Supporter of Sacred Heart

1012 Hyde Park Ave., Hyde Park, MA 02136  
**617.361.2000 • 617.634.9193**  
 Business Hours: Mon-Sat: 8AM-5PM

MASSACHUSETTS REGISTERED AUTO REPAIR & SERVICE  
**1600**  
 WE DO MASS STATE INSPECTIONS!

An active parish member

Real Estate Services  
 Neighborhood expertise  
 over 35 years experience

Rob Grady  
 Insight Realty Group

1429 Centre Street  
 Boston, MA 02132  
 508.221.8989 mobile  
 rob@robgradyrealestate.com



**Ronald Krupa Insurance Agency, Inc.**  
 25 Corinth Street, Roslindale  
 Auto • Home • Life • Health • Business  
**617-323-6900**  
 www.krupainsurance.com • krupainsurance@comcast.net

**ST. MARY'S CEMETERY**

St Mary's Cemetery in Needham, founded in the 1870's, is the parish cemetery of Mary Immaculate of Lourdes. The Cemetery is a reverent resting place for those awaiting reunion with the Risen Lord. The decision to pre-plan and purchase interment rights is a responsible and thoughtful gesture, sparing loved ones the stress of making difficult decisions during a time of grief and loss.

For information, call the cemetery staff at Mary Immaculate of Lourdes Church at **781-235-1841**.  
 St. Mary's Cemetery | 1 Wellesley Avenue,  
 Needham, MA 02494

**your bank for life**

**tcb** thecooperativebank.com | 40 Belgrade Ave, Roslindale, MA, 617-325-2900  
 201 Main St., Charlestown, MA. 617-242-0380 | 36 Spring St., West Roxbury, MA. 617-325-9955

EQUAL HOUSING LENDER MEMBER S I F MEMBER MEMBER FDIC